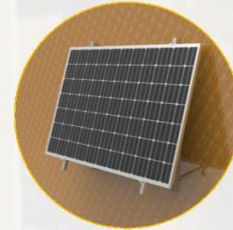


POWER BALCONY



Installed on balcony with curved hook

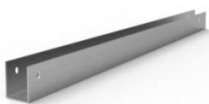


Installed on wall with expansion bolts

SYSTEM PARAMETER

Type	Balcony Solar Mounting System
Application	Ground/Roof/Balcony/Guardrail
Tilt Angle	10°-30° Adjustable
Material	AL6005-T5, Steel, SUS304
Panel Layout	Landscape (Horizontal)
Max Panel width	1150mm
Design Standard	AS/NZS 1170, DIN 1055, JIS C8955: 2017, international Building Code IBC 200
Warranty	10 year
Max wind Speed	35m/s
Max Snow Load	1.0KN/m2
Color	Natural Silver or Black

SYSTEM COMPONENTS



MAIN COLUMN



AUXILIARY COLUMN



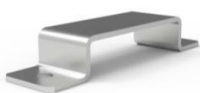
CROSS BRACE



CROSS BRACE



RAILING HORIZONTAL SUPPORT



HOOP



HOOK



END CLAMPS